

# Agenda

Apologies for absence

---

To receive declaration of interest to items on the agenda

---

To discuss the traffic study results

---

Update on full results from flood study

---

Update on LIF Road Safety Project

---

Network Rail proposals for Bramley Level Crossing

---

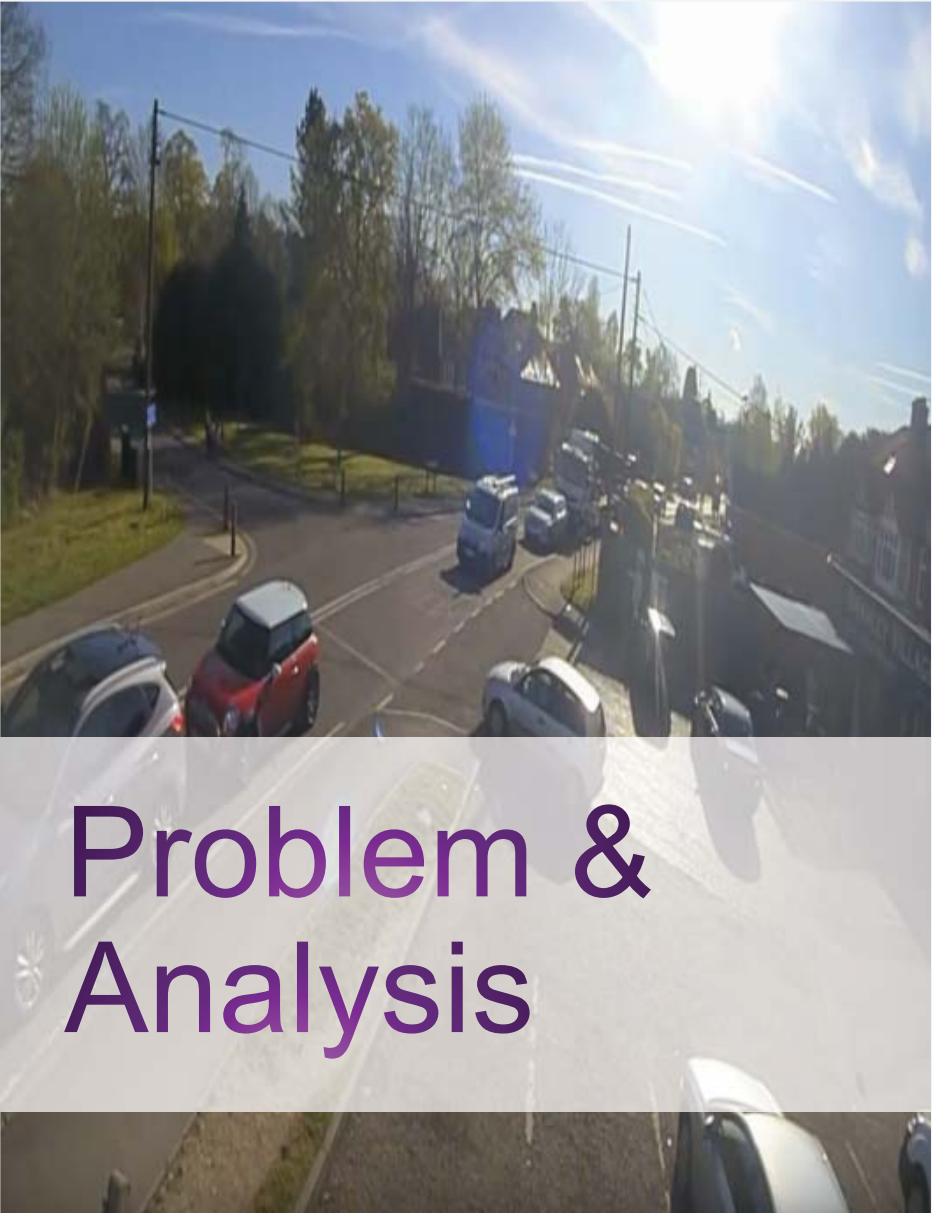
Confirm date of next meeting – Wed 19<sup>th</sup> Oct 2016

---

*Traffic Study  
2016*

# Bramley Parish





# Problem & Analysis

- ▶ Traffic within Parish when linked to development is the No1 concern for residents
- ▶ Consistent development applications have used out of date and limited content for traffic impact assessments
- ▶ The accompanying Transport Assessments all concluded

*“The traffic movements generated by the proposals are likely to be very low and will result in a minimal impact on the operation of the local highway network.”*
- ▶ However, they only looked at adjacent junctions and the increase in vehicles at the level crossing.

# Mission Statement

To commission an independent consultant to undertake an in depth traffic assessment for the Parish, specifically to address these points;



A much larger assessment area than developers and highways have historically used



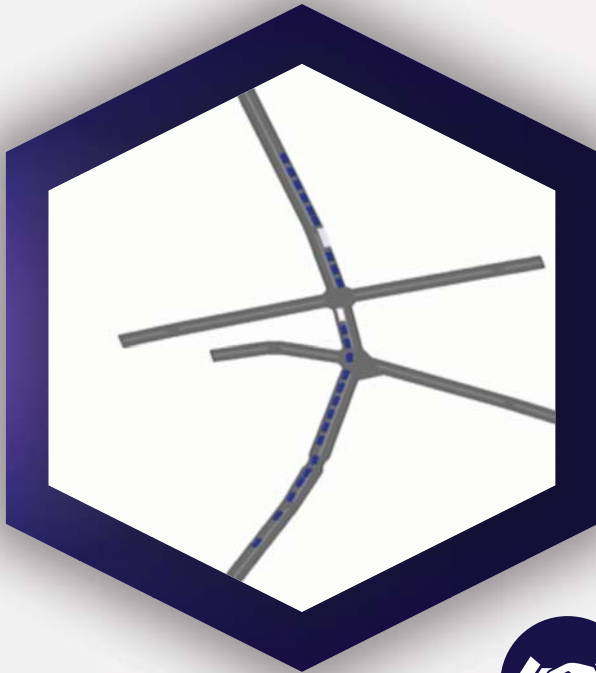
To consider not only the long term growth in traffic but the developments of Minchens Lane (200), Strawberry Fields (50) and The Street (84)



Build a micro-simulation traffic model



Undertake more comprehensive traffic surveys



# Why does Bramley need a traffic model

- Basingstoke and Deane adopted local Plan

- Policy D5
- Policy D8
- Policy C2

To support future objections

- Basingstoke and Deane local development plan

- Policy SS5 - An allocation of at least 200 homes for Bramley

- Planning applications approved

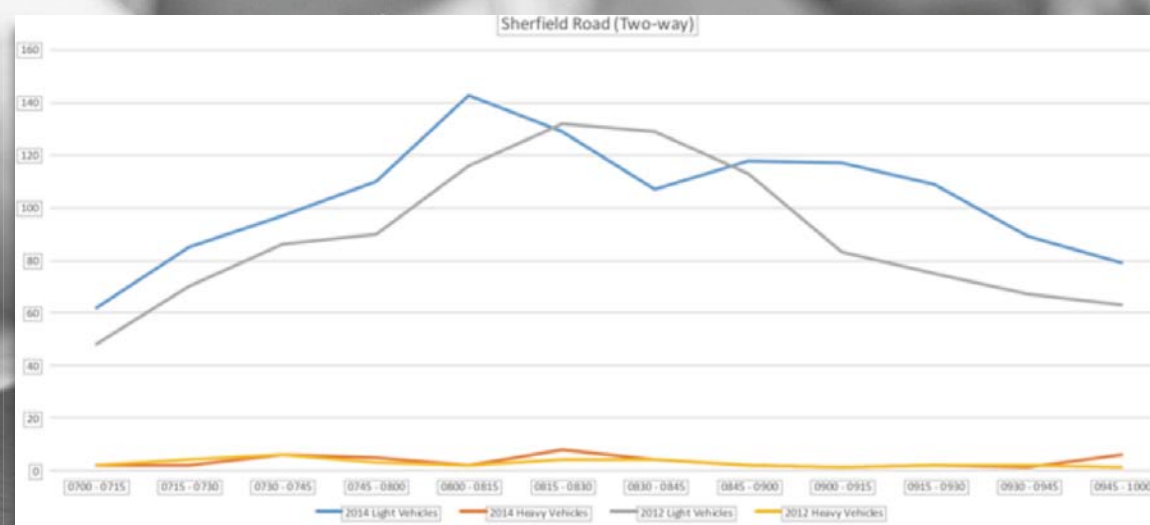
- Minchens Lane 200
- Sherfield Road 50
- The Street 84



# Transport assessment paper March 2016

Based on existing data – as used by Highways/developers

- Wednesday November 7th 2012
- Thursday March 20th 2014
- Tuesday April 29th 2014



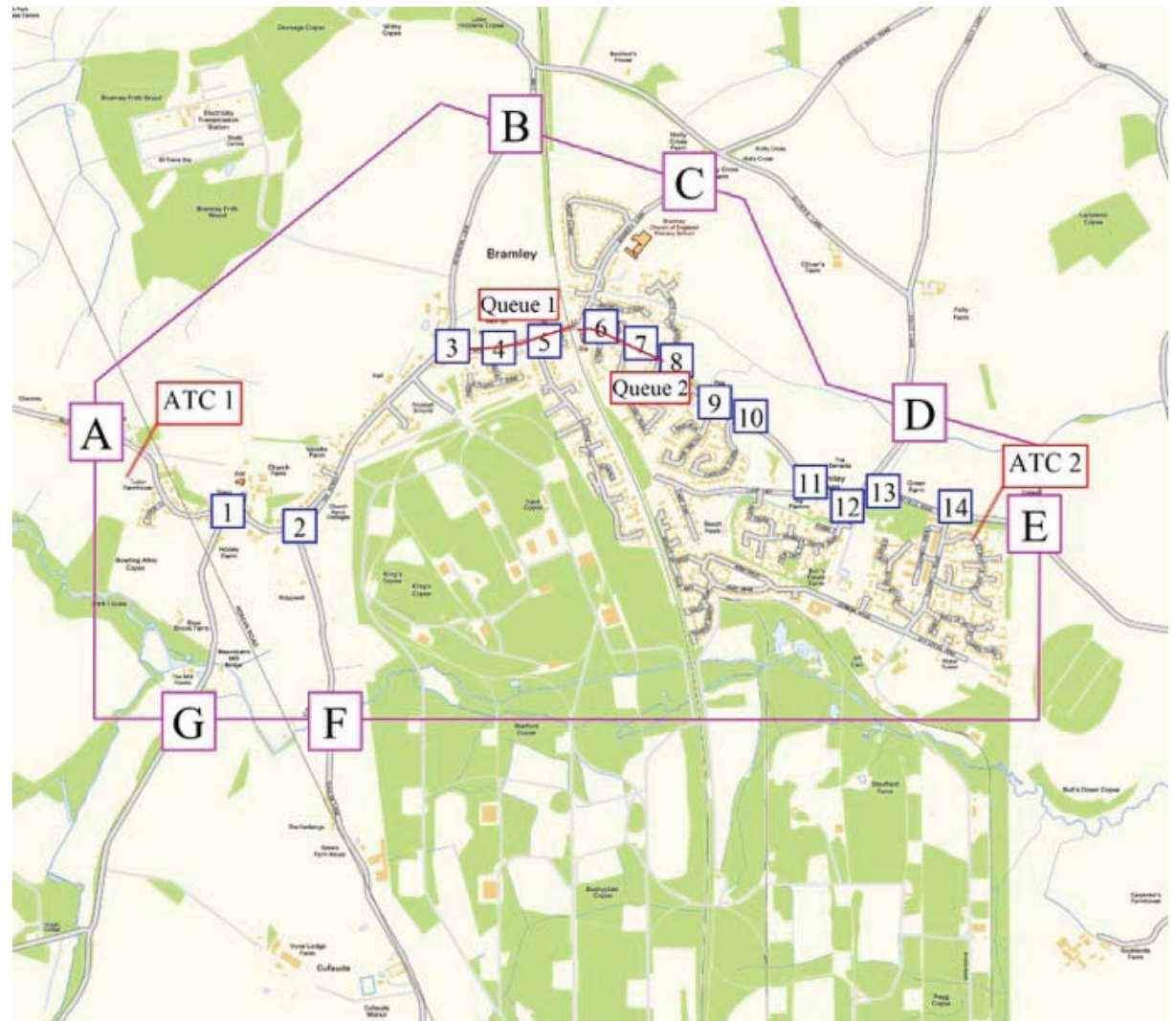


Undertaken by experts Tracsis Traffic and Data Services

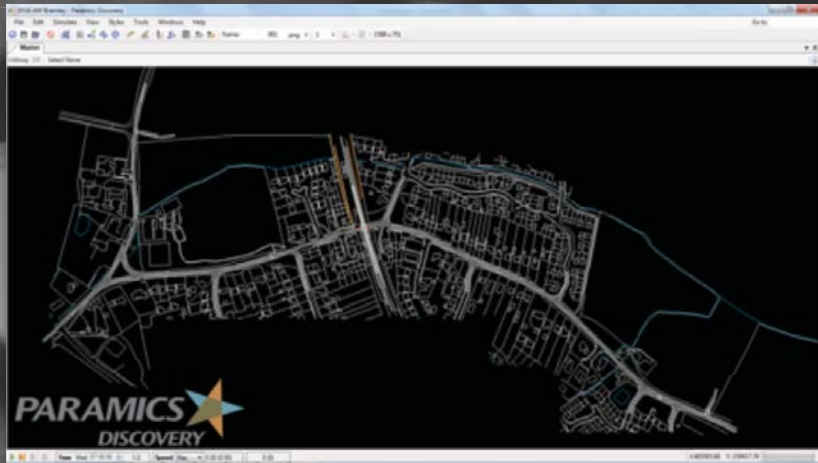
- Automatic Number Plate Recognition Surveys
- Junction Turning Movement Counts
- Queue Length Surveys
- Automatic Traffic Counts
- 1 week period

# Traffic survey

- 7 ANPR Sites
- 14 Turning movement sites
- 2 Automatic Traffic counts
- 2 Queue Length Surveys







Micro-simulation is a computer program that simulates vehicles driving on a highway network.

It is the ideal tool for representing the Bramley road network and level crossing.

The road network is built on the OS digital CAD background.

The base traffic flows are obtained from traffic surveys.

## Paramics Discovery Micro-simulation Traffic model

## Base Traffic Models

2016 AM – 07:00 to 10:00 using the Traffic survey data

2016 PM – 16:00 to 19:00 using the Traffic survey data

## Future Traffic Models

2021 AM – this is the 2016 flows factored to 2021 using the National Transport Model (NTM) traffic growth calculations.

2021 AM + Developments – this has the added traffic from the three developments, the green cars are Sherfield Road, the light blue are Minchens Lane and the orange cars are from The Street.



**2016 AM SURVEY**



**2016 PM SURVEY**



**2021 AM SURVEY**



**2021 AM + DEVELOPMENT**

**GREEN CARS – SHERFIELD ROAD**  
**LIGHT BLUE CARS – MINCHENS LANE**  
**ORANGE CARS – THE STREET**

# Communication Plan

## Hampshire County Council

- LIF Partnership
- Meeting Highways
- Presentation of findings

## Basingstoke and Deane Borough

- Local plan
- Travel plan

## Other Parishes

- Sherfield-on-Loddon
- Others ?

## Parish Residents

- Community engagement day
- Data online availability
- Feedback





*Flood plain study  
2015*

# Bramley Parish





# Problem & Analysis

- ▶ Planning application 15/02708/OUT  
Land to the North of Bramley – Strawberry Fields
- ▶ Original application for up to 200 dwellings
- ▶ Area is detailed within the environment agency area fluvial (rivers) floodplain of the Bramley Green Stream
- ▶ Consistent planning applications were being submitted with generic information based on desktop studies
- ▶ The Environment Agency (EA) flood map is based upon nationalised flood modelling methodologies, which due to their low resolution and coarse topographic data are inherently inaccurate.



# Executive Summary

To commission an independent consultant to undertake a flood study report to assess planning application reference number 15/02708/OUT.



Problem facing your company,  
our proposed solution

# Bramley Flood Study report February 2016

**The model study was submitted to the EA as a ‘flood map challenge’ to improve the accuracy of their flood map, so safeguarding the position of the Parish Council’s existing constituents, and indeed those of the new development should the Local Planning Authority grant planning permission.**

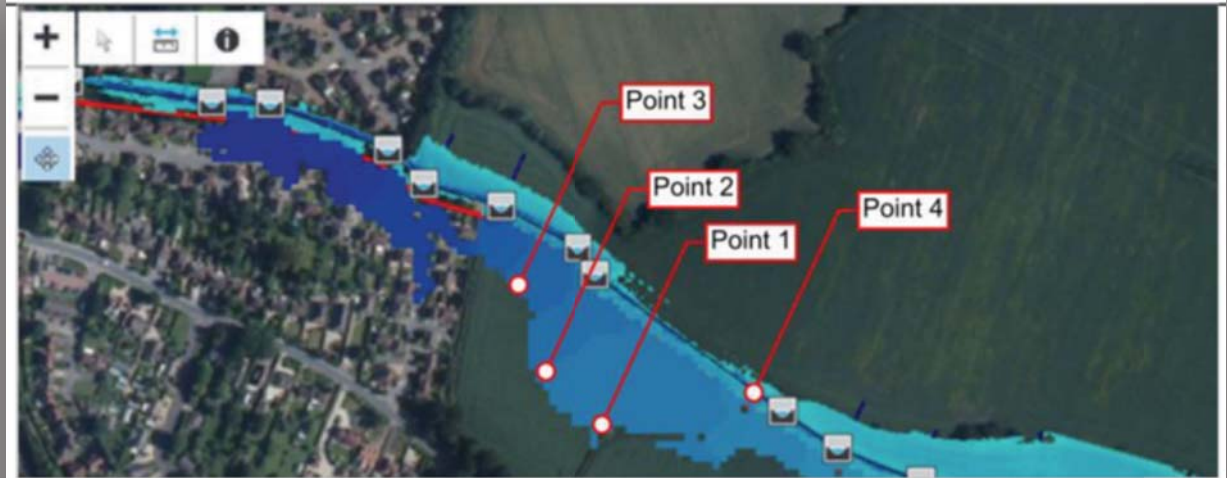
**This generated pre conditions in which detailed flood assessments were carried out on site.**





# Revised flood outline

Q100 flood outline, with sampling point locations and flood levels (m AOD).



Point	1	2	3	4
Q100 (design level)	56.40	56.50	56.73	56.23
Q100 + 20%	56.44	56.51	56.83	56.28
Q100 - 20%	56.35	56.44	56.68	56.22
Manning's n + 20%	56.43	56.53	56.85	56.27
Manning's n - 20%	56.38	56.48	56.71	56.24
Gradient + 20%	56.41	56.52	56.76	56.25
Gradient - 20%	56.41	56.50	56.76	56.25

# Bramley Flood Study report February 2016

**The revised plan submitted was found to be reasonable in provision of attenuation features in terms of best practice.**



*Local  
Infrastructure  
Fund*

*Road and path  
safety  
improvements*



**Bramley Parish**







# LIF update

- ▶ Contract agreed and signed between BDBC and Parish Council
- ▶ Meeting 28<sup>th</sup> September HCC consultants, BDBC & Parish Council – deployment of contracts
- ▶ Topographical survey completed on junction of Sherfield Road and Bramley Lane. Survey for proposed footpath outstanding subject to confirmation of access from Network Rail (meeting to be arranged);
- ▶ C2s obtained for any utilities that may be affected;
- ▶ Request for ecological support submitted in relation to scheme (Ecological Impact Assessment);  
Geotechnical Site Investigation commissioned – lead-in time approx. 3 weeks and subject to access arrangements/agreement with Network Rail (meeting to be arranged).





# LIF update To do

- Completion of topographical survey on footpath;
- Submission of C3/C4 notices in relation to utilities;
- Geotechnical Site Investigation to begin;
- Detailed design and preparation of drawings to start;
- Confirmation of land boundaries;
- Street lighting design to be commissioned following confirmation of land ownership;
- Negotiations to be instigated regarding land.



**Rights of Way – Dedication & Extinguishments – 8 weeks**

**Negotiations/Legal agreements with relevant Landowners– 16 weeks min**

# Project plan

A blurred background image showing a person's hand and arm in motion, possibly gesturing or pointing, against a light-colored wall. The image is out of focus, creating a soft, ethereal effect.

# Thank You